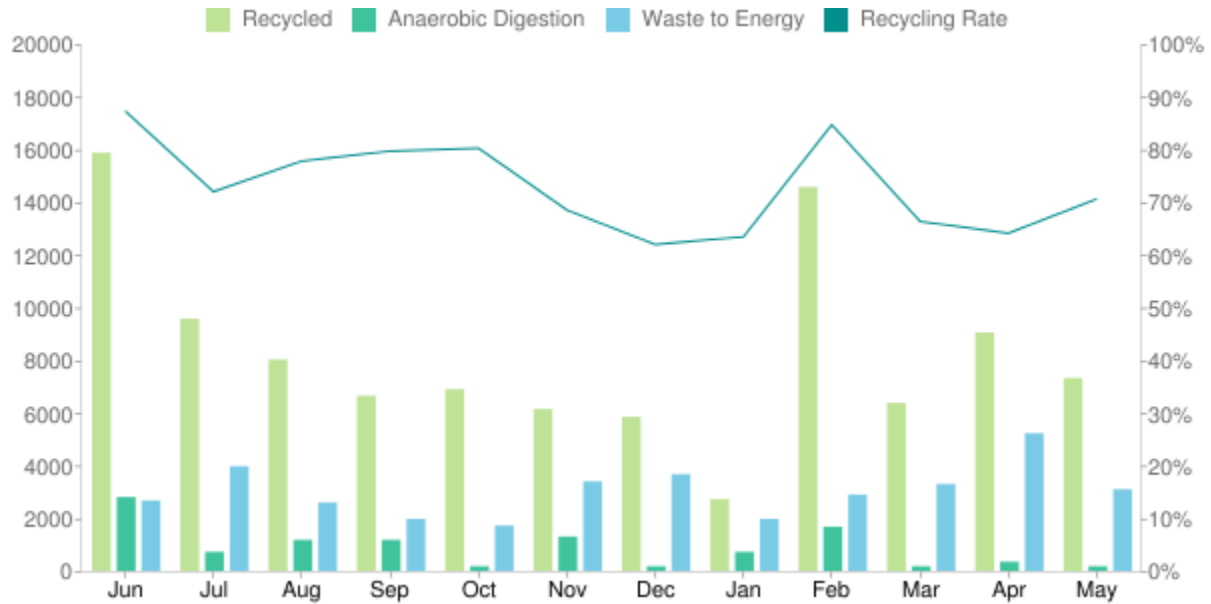


Material collected (kgs)

FROM JUNE 2018 TO MAY 2019



| Jun | Jul | Aug | Sep | Oct | Nov | Dec | Jan | Feb | Mar | Apr | May | Total |
|--------|-------|-------|-------|-------|-------|-------|-------|--------|-------|-------|-------|--------|
| 15,875 | 9,575 | 8,025 | 6,650 | 6,900 | 6,150 | 5,850 | 2,725 | 14,575 | 6,375 | 9,050 | 7,325 | 99,075 |
| 2,805 | 725 | 1,180 | 1,180 | 180 | 1,305 | 180 | 725 | 1,680 | 180 | 350 | 180 | 10,670 |
| 2,675 | 3,975 | 2,600 | 1,975 | 1,725 | 3,400 | 3,675 | 1,975 | 2,900 | 3,300 | 5,225 | 3,100 | 36,525 |
| 87% | 72% | 78% | 80% | 80% | 69% | 62% | 64% | 85% | 67% | 64% | 71% | 75% |

Material recycled

FROM JUNE 2018 TO MAY 2019

CARDBOARD

29,500 kg

JUNK REMOVAL

0 kg

COFFEE GROUNDS

7,420 kg

MIXED RECYCLING

69,050 kg

FOOD RECYCLING

3,250 kg

PAPER SHREDDING

475 kg

GENERAL WASTE

36,525 kg

WEEE AND TONER

50 kg

GLASS

0 kg

Key statistics

THIS MONTH PAST 12 MONTHS

TREES
SAVED:

64 792

CO2
TONNES SAVED:

11 147

KWH
ENERGY PRODUCED:

1,745 33,511

RECYCLING
RATE:

71% 75%