



Sutton BID

May 2017

01/05/2017 to 28/05/2017



REGION - Greater London

Monday to Sunday

COUNT TYPE: Footfall

Monthly Footfall

Benchmark calculations (Year on Year and Month on Month) have been calculated using like for like data sets (only those counters available in both comparison periods) to ensure statistical accuracy

	Year to Date % Change		Year on Year % Change		Month on Month % Change	
	2017	2016	2017	2016	2017	2016
Sutton BID	▼ -10.9 %	▼ -4.3 %	▼ -12.4 %	▲ 3.3 %	▲ 6.6 %	▲ 3.0 %
Greater London	▲ 0.1 %	▼ -2.3 %	▼ -2.6 %	▲ 0.8 %	▼ -2.4 %	▲ 2.8 %
UK	▲ 0.5 %	▼ -2.0 %	▼ -2.1 %	▲ 1.5 %	▼ -1.0 %	▲ 3.1 %

Headlines

Footfall for the year to date is 10.9% down on the previous year.

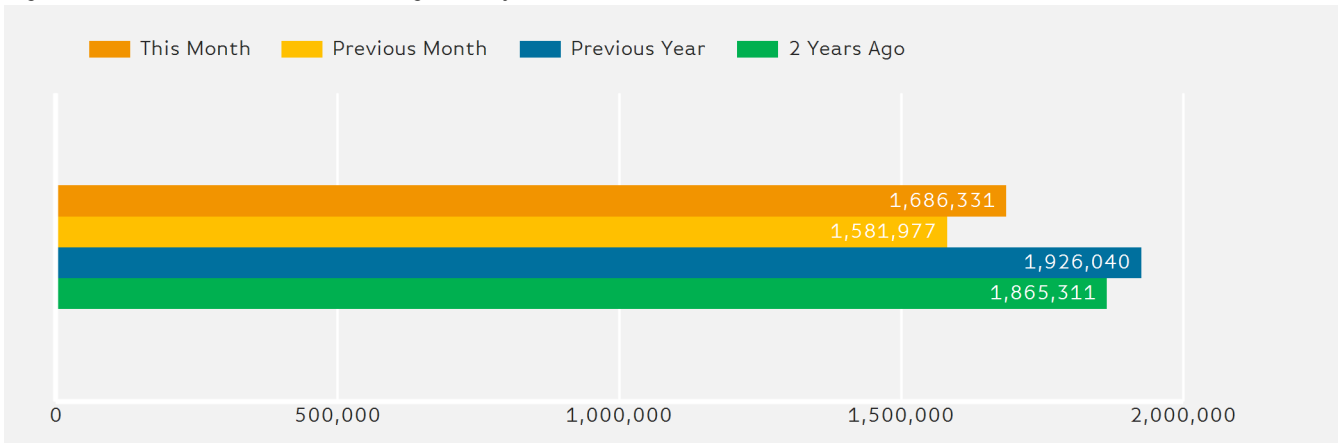
The number of visitors counted for month commencing 1 May 2017 was 1,686,331.

The busiest day in month commencing 1 May 2017 was Saturday 20 May with 83,951 visitors.

The peak hour of the month was 12:00 on Saturday with footfall of 10,196

Footfall Totals by Month

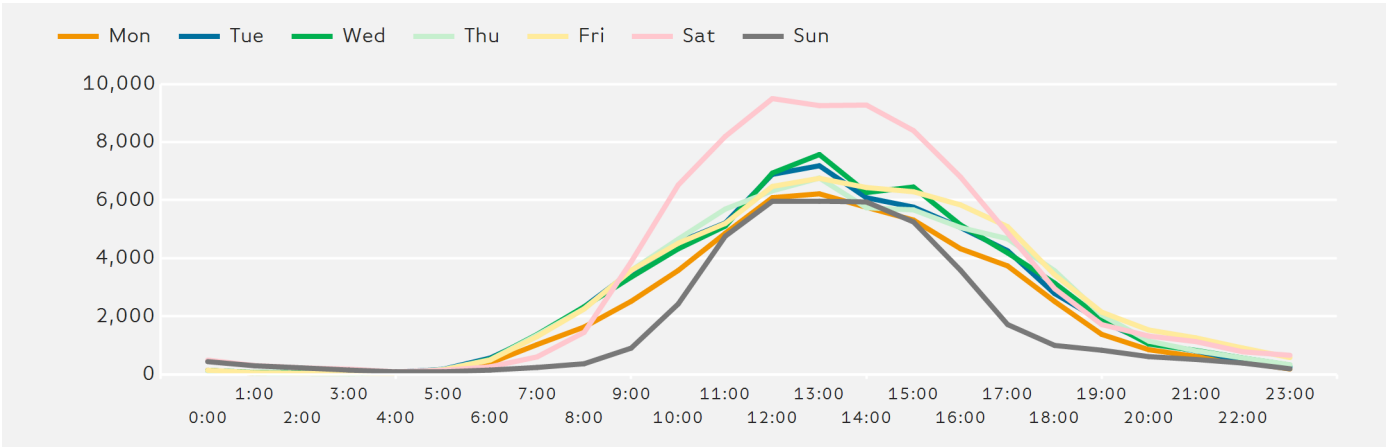
Figures shown below are calculated using monthly totals.



Springboard follows the BRC calendar consisting of complete weeks (Sun- Sat or Mon-Sun) to ensure that the same day is comparable each week. Each month is compiled from a set of full weeks which results in a calendar of a 4 week month, 4 week month, 5 week month pattern.

Footfall by Hour

The figures shown below are calculated using a weekly average



Weather



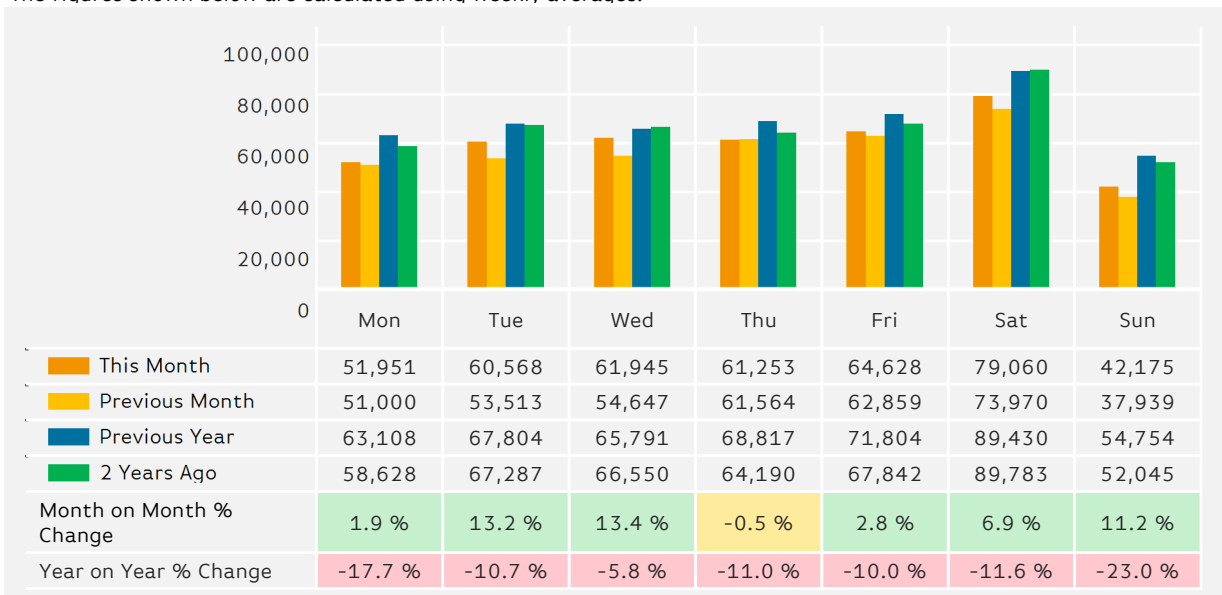
Number of days this month	13	11	4
Number of days same month last year	17	9	2

Average Temperature

Average Temperatures	Maximum Temperature	Minimum Temperature
2017	18.9	9.9
2016	18.7	9.4

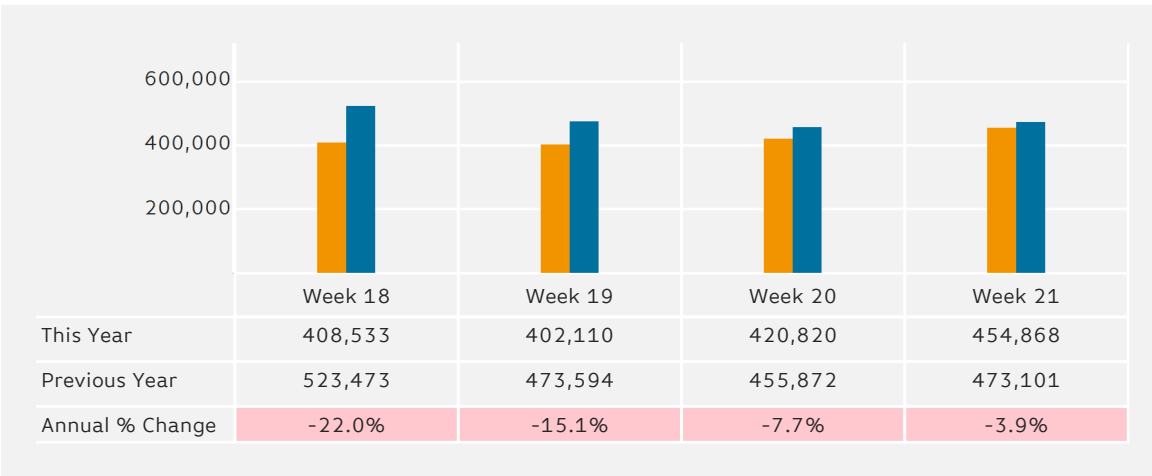
Footfall by Day

The figures shown below are calculated using weekly averages.



Footfall by Week of Month

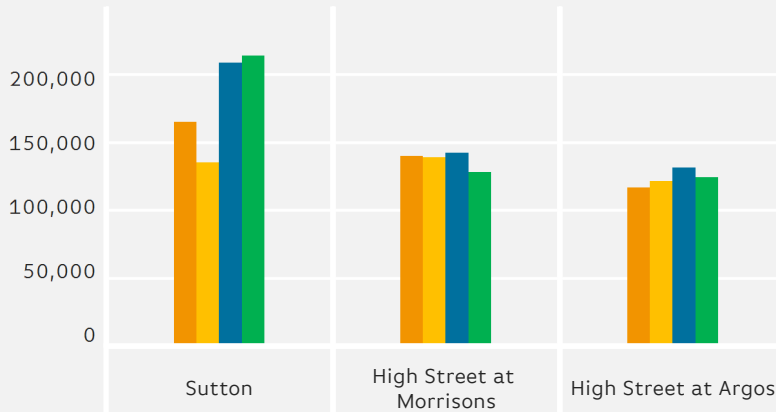
The figures shown below are calculated using weekly totals.



Footfall Totals

The figures shown below are calculated using weekly averages.

■ This Month
 ■ Previous Month
 ■ Previous Year
 ■ ...

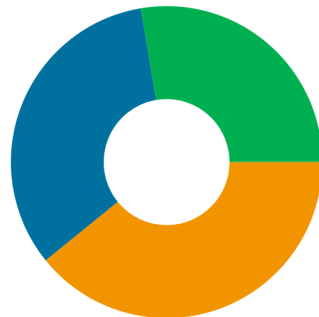


	Sutton	High Street at Morrisons	High Street at Argos
This Month	165,082	139,950	116,551
Previous Month	135,182	138,817	121,496
Previous Year	208,290	141,993	131,228
2 Years Ago	213,674	128,251	124,404
Year on Year % Change	-20.7 %	-1.4 %	-11.2 %

Footfall Totals

Counting By Location - Main Locations Only

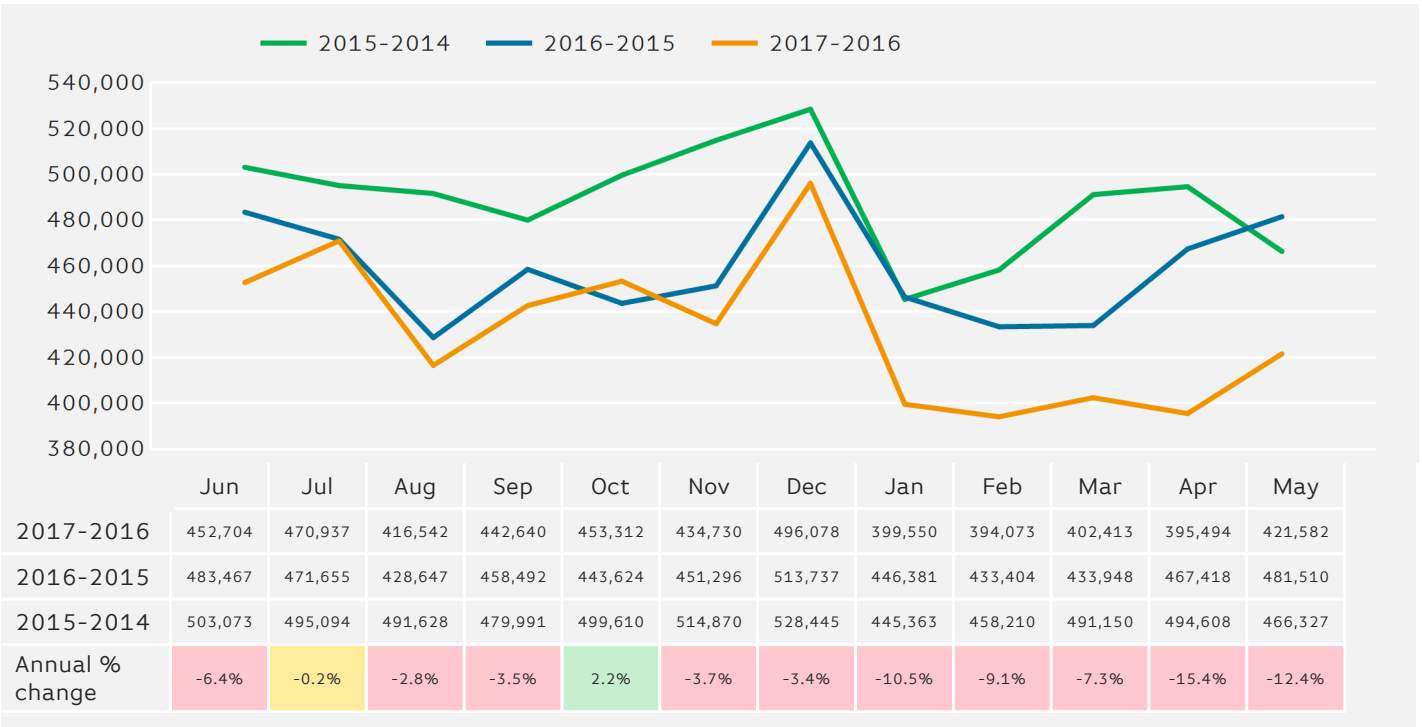
The figures shown below are based on weekly averages



- Sutton, 39.2 %
- High Street at Morrisons, 33.2 %
- High Street at Argos, 27.6 %

Footfall - Rolling 12 Months

The figures shown below are calculated using weekly averages.



Year to Date % Change is the annual % change in footfall from January of this year compared to the same period last year.
 Year on Year % Change is the % change in footfall for this week compared to the same week in the previous year.
 Week on Week % Change is the % change in footfall for this week from the previous week.