



**Sutton BID**

April 2017

03/04/2017 to 30/04/2017



REGION - Greater London

Monday to Sunday

COUNT TYPE: Footfall

**Monthly Footfall**

Benchmark calculations (Year on Year and Month on Month) have been calculated using like for like data sets (only those counters available in both comparison periods) to ensure statistical accuracy

	Year to Date % Change		Year on Year % Change		Month on Month % Change	
	2017	2016	2017	2016	2017	2016
Sutton BID	▼ -10.5 %	▼ -6.1 %	▼ -15.4 %	▼ -5.5 %	▼ -1.7 %	▲ 7.7 %
Greater London	▲ 0.4 %	▼ -3.1 %	▲ 1.8 %	▼ -5.2 %	▲ 4.9 %	▲ 5.9 %
UK	▲ 0.3 %	▼ -2.8 %	▲ 1.8 %	▼ -4.9 %	▲ 4.0 %	▲ 5.3 %

**Headlines**

Footfall for the year to date is 10.5% down on the previous year.

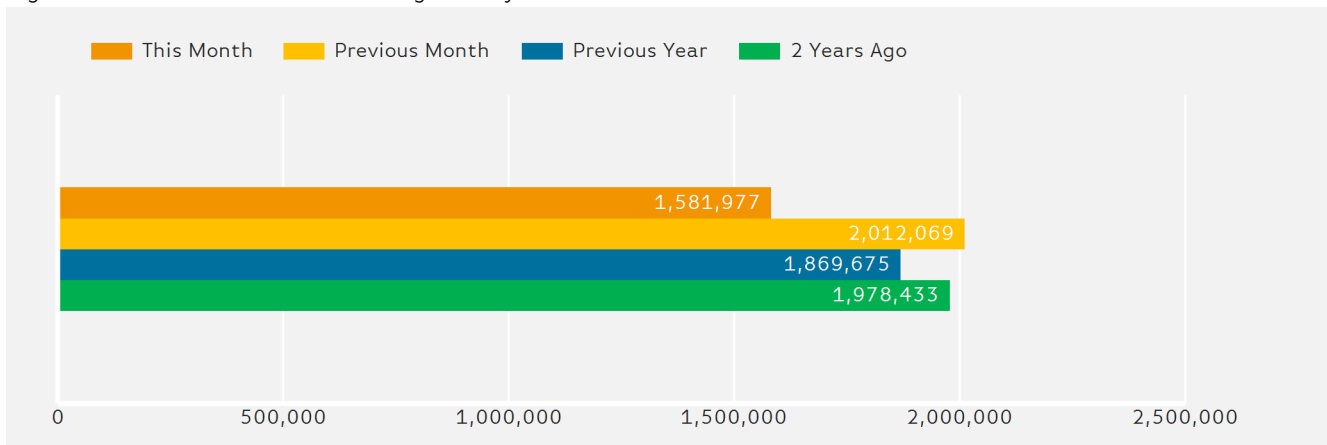
The number of visitors counted for month commencing 3 April 2017 was 1,581,977.

The busiest day in month commencing 3 April 2017 was Saturday 8 April with 85,842 visitors.

The peak hour of the month was 14:00 on Saturday with footfall of 10,114

**Footfall Totals by Month**

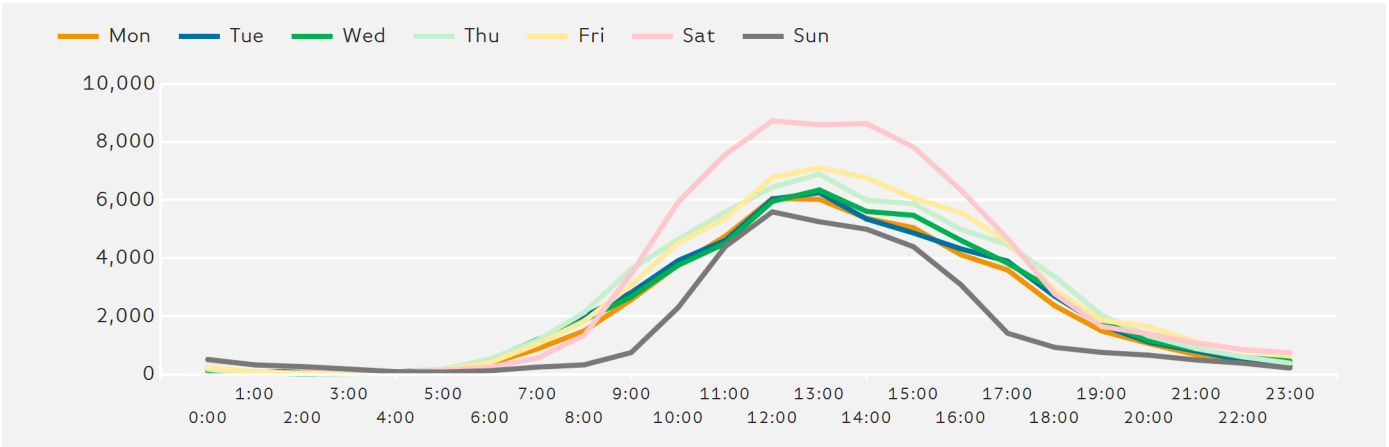
Figures shown below are calculated using monthly totals.



Springboard follows the BRC calendar consisting of complete weeks (Sun- Sat or Mon-Sun) to ensure that the same day is comparable each week. Each month is compiled from a set of full weeks which results in a calendar of a 4 week month, 4 week month, 5 week month pattern.

### Footfall by Hour

The figures shown below are calculated using a weekly average



### Weather



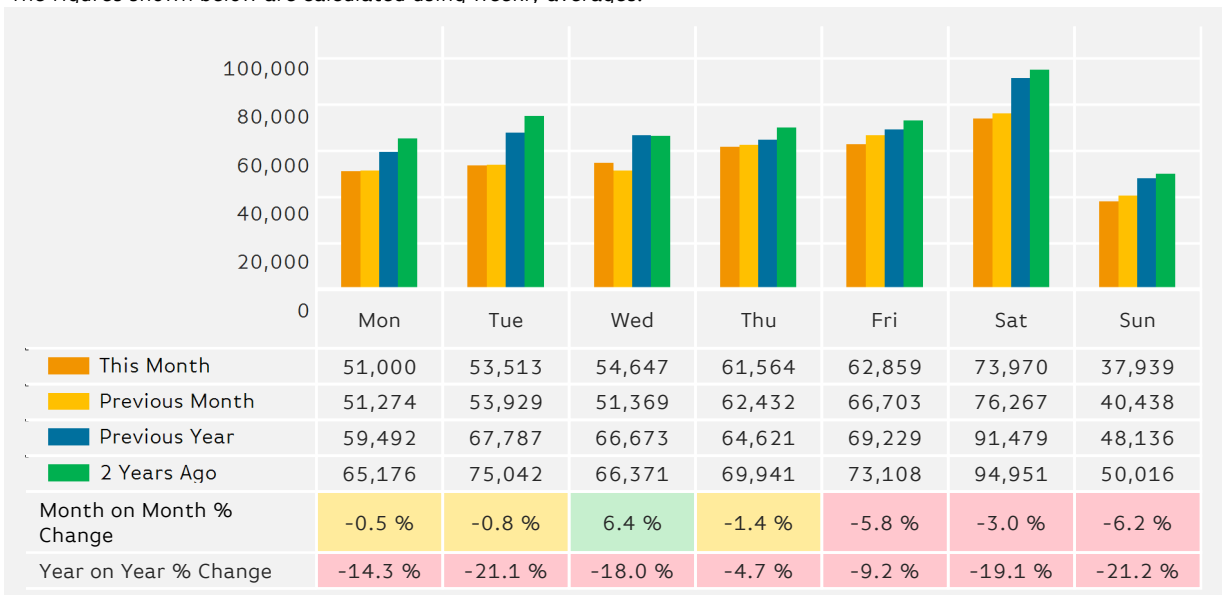
Number of days this month	14	12	2
Number of days same month last year	17	7	4

### Average Temperature

Average Temperatures	Maximum Temperature	Minimum Temperature
2017	15.4	5.5
2016	13.2	4.6

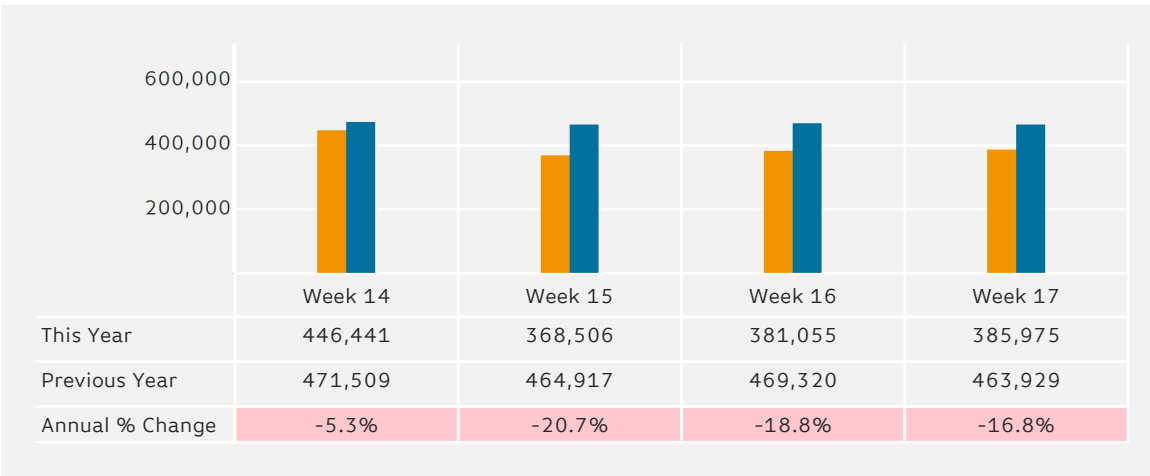
### Footfall by Day

The figures shown below are calculated using weekly averages.



### Footfall by Week of Month

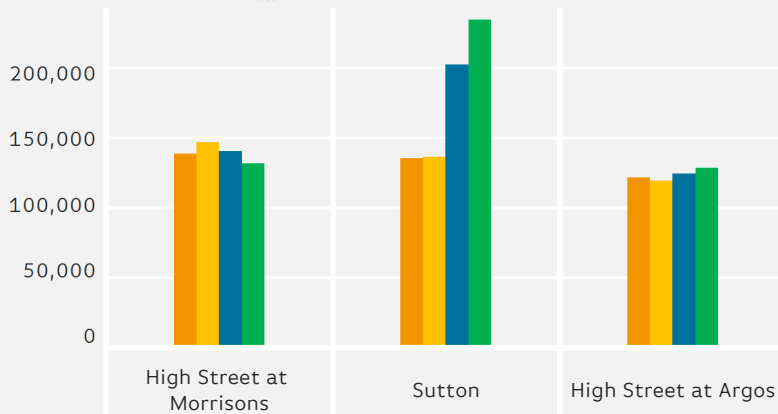
The figures shown below are calculated using weekly totals.



### Footfall Totals

The figures shown below are calculated using weekly averages.

■ This Month   
 ■ Previous Month   
 ■ Previous Year



	High Street at Morrisons	Sutton	High Street at Argos
This Month	138,817	135,182	121,496
Previous Month	146,963	136,207	119,244
Previous Year	140,648	202,326	124,445
2 Years Ago	131,673	234,631	128,304
Year on Year % Change	-1.3 %	-33.2 %	-2.4 %

### Footfall Totals

Counting By Location - Main Locations Only

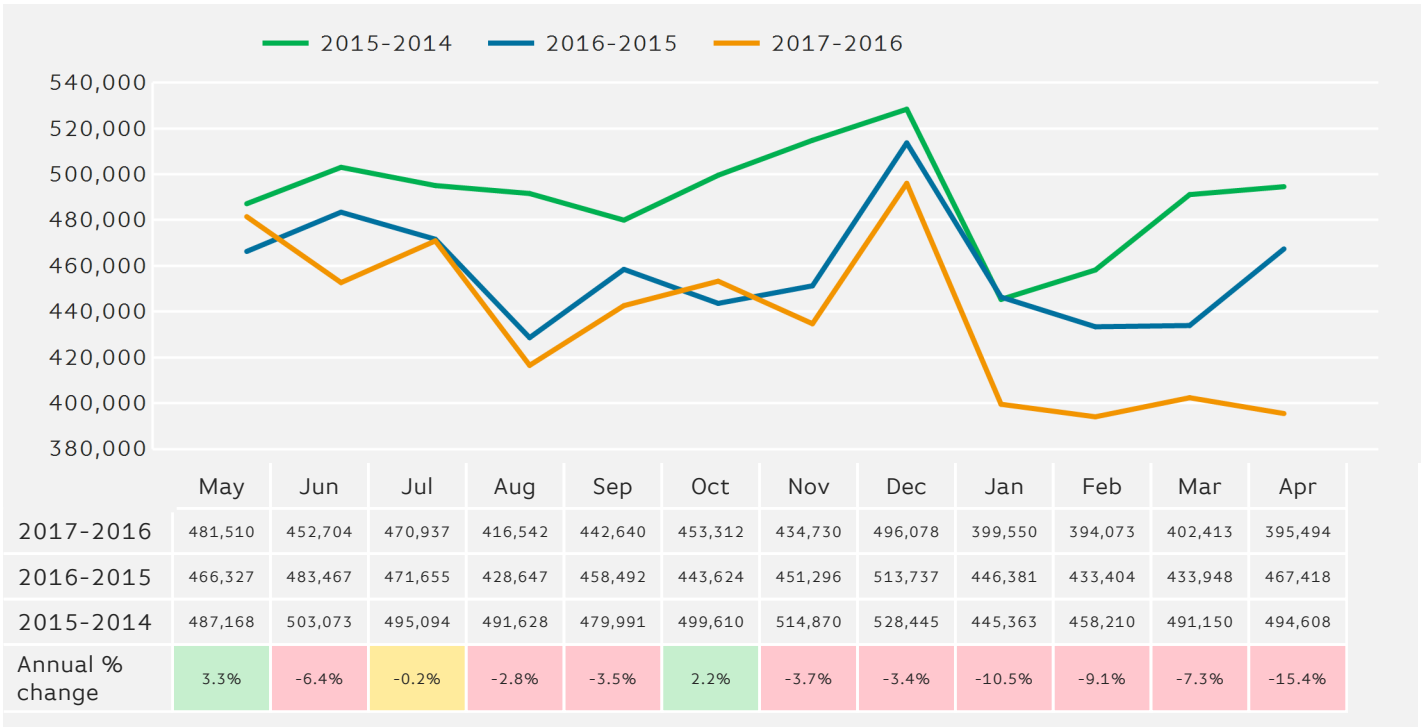
The figures shown below are based on weekly averages



- High Street at Morrisons, 35.1 %
- Sutton, 34.2 %
- High Street at Argos, 30.7 %

**Footfall - Rolling 12 Months**

The figures shown below are calculated using weekly averages.



Year to Date % Change is the annual % change in footfall from January of this year compared to the same period last year.  
 Year on Year % Change is the % change in footfall for this week compared to the same week in the previous year.  
 Week on Week % Change is the % change in footfall for this week from the previous week.