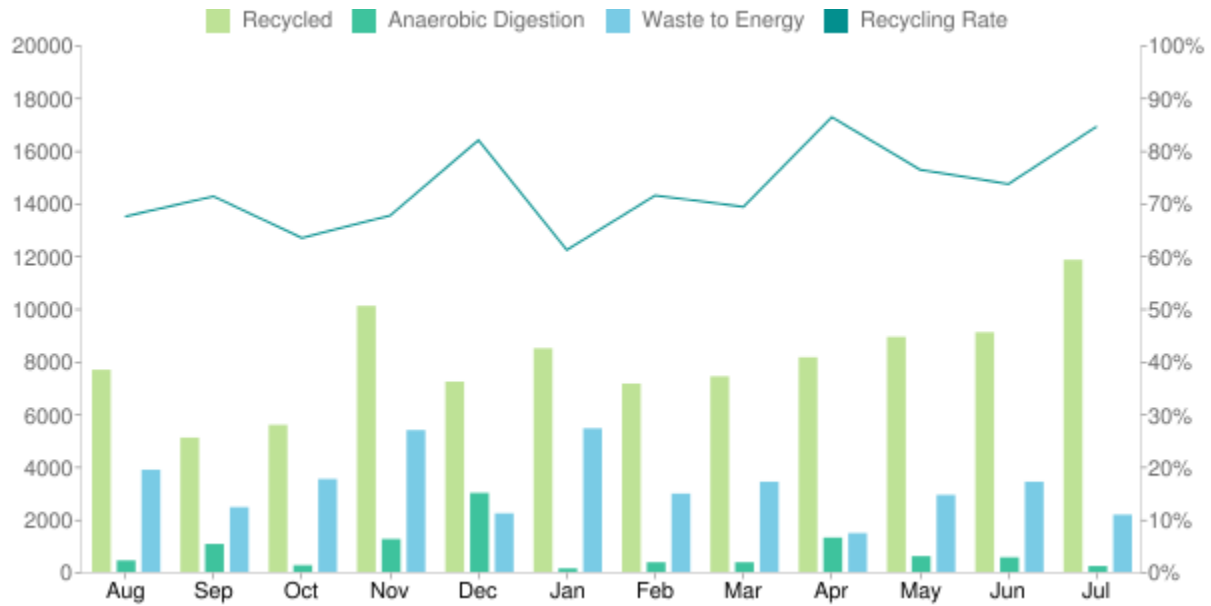


## Material collected (kgs)

LAST 12 MONTHS



Aug	Sep	Oct	Nov	Dec	Jan	Feb	Mar	Apr	May	Jun	Jul	Total
7,675	5,100	5,584	10,100	7,225	8,490	7,150	7,425	8,150	8,925	9,100	11,850	96,774
438	1,062	255	1,250	3,000	135	368	368	1,305	600	555	225	9,560
3,880	2,460	3,529	5,385	2,225	5,450	2,975	3,425	1,475	2,925	3,425	2,175	39,329
68%	71%	64%	68%	82%	61%	72%	69%	87%	77%	74%	85%	73%

## Material recycled

LAST 12 MONTHS

CARDBOARD

**32,265** kg

JUNK REMOVAL

**0** kg

COFFEE GROUNDS

**6,875** kg

MIXED RECYCLING

**64,400** kg

FOOD RECYCLING

**2,679** kg

PAPER SHREDDING

**0** kg

GENERAL WASTE

**38,010** kg

WEEE AND TONER

**0** kg

GLASS

**0** kg

## Key statistics

	THIS MONTH	PAST 12 MONTHS
TREES SAVED:	72	733
CO <sub>2</sub> TONNES SAVED:	17	142
KWH ENERGY PRODUCED:	1,248	22,308
RECYCLING RATE:	85%	73%